



CATALO PRODUCC



NICKEL PLATED BRASS BALL VALVES – Standard Port

ISO 9001 Manufacturer!

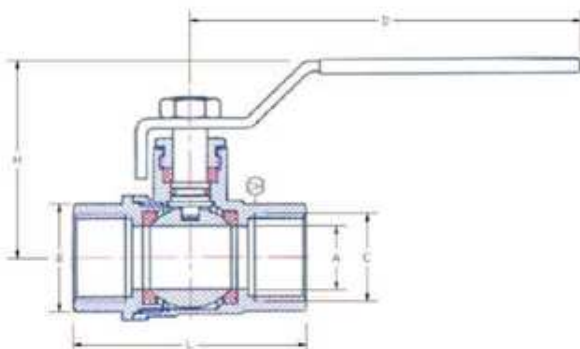


Features:

- ✦ Nickel Plated Brass Body – for extra strength & corrosive resistance
- ✦ Chrome Plated Brass Ball
- ✦ Suitable for full range of liquids and gas
- ✦ Fast 1/4 turn open or closed operation
- ✦ Flow can go both directions
- ✦ Each valve individually tested
- ✦ Blow-out proof stem
- ✦ NPT Threaded ends to ANSI B1.20.1
- ✦ Blue vinyl insulator on heavy duty plated steel handles

Dimension:

Part No.	Size	A	B	C	D	L	CH
VBBN3-025	1/4"	0.39	1.06	1/4"NPT	3.15	1.77	0.83
VBBN3-038	3/8"	0.39	1.06	3/8"NPT	3.15	1.77	0.83
VBBN3-050	1/2"	0.59	1.08	1/2"NPT	3.15	1.89	0.98
VBBN3-075	3/4"	0.75	1.34	3/4"NPT	3.62	2.09	1.18
VBBN3-100	1"	0.94	1.61	1"NPT	4.02	2.56	1.46
VBBN3-125	1 1/4"	1.14	2.28	1 1/4"NPT	5.12	3.15	1.85
VBBN3-150	1 1/2"	1.38	2.09	1 1/2"NPT	5.66	3.26	2.13
VBBN3-200	2"	1.93	3.15	2"NPT	5.71	3.94	2.64
VBBN3-250	2 1/2"	2.28	3.94	2 1/2"NPT	11.02	5.12	3.27
VBBN3-300	3"	2.76	4.72	3"NPT	8.82	5.59	3.66
VBBN3-400	4"	3.35	5.63	4"NPT	8.82	6.57	4.84



Material:

Body:	Nickle Plated Brass
Ball:	Chrome Plated Brass
Stem:	Brass
Seats:	Teflon
Gaskets:	Teflon
Handle:	Iron with rubber sleeves

Specification:

Pressure Rate:	400 WOG
Working Temp:	-20 – 200 degree F
Applicable	water ,oil and gas

- Information provided here may change without notification
- Other sizes and range are available on special order



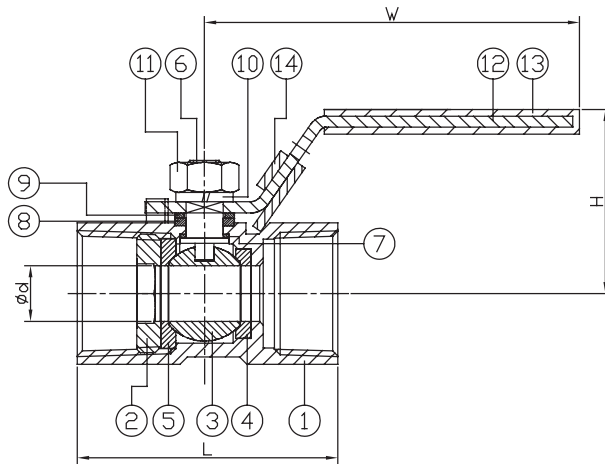
Industrial Valves
make it happen!

1-PC. SCREWED END BALL VALVE



FEATURES

- Reduced Port, 1/4"~2"
- W.P. : 1000 WOG (PN63)
- W.T. : -20°C~200°C (-4°F~392°F)
- Investment casting
- Blow-out proof stem
- Anti-static device (option)
- Locking device
- Thread type : ASTM B1.20.1 (NPT)
DIN2999 & BS21
ISO7/1 & EN10226



ITEM	PARTS	MATERIAL	
1	BODY	ASTM A351-CF8M	ASTM A351-CF8
2	RETAINER		
3	BALL	ASTM A351-CF8M	
4	SEAT A	PTFE / RTFE	
5	SEAT B		
6	STEM	AISI 316	AISI 304
7	THRUST WASHER	PTFE	
8	PACKING		
9	GLAND RING	AISI 304	
10	SPRING WASHER		
11	STEM NUT		
12	HANDLE	PVC	
13	HANDLE SLEEVE		
14	LOCKING DEVICE	AISI 304	

DN	d	L	W	H
8	5	39	71	33
10	7	44	91	35
15	9.2	55	95	40
20	12.5	59	95	44
25	15	69	113	50
32	20	77	113	57
40	25	81	141	64
50	32	97	141	68

unit:mm

NPS	d	L	W	H
1/4"	0.2	1.54	2.8	1.3
3/8"	0.28	1.73	3.58	1.38
1/2"	0.36	2.17	3.74	1.57
3/4"	0.49	2.32	3.74	1.73
1"	0.59	2.72	4.45	1.97
1-1/4"	0.79	3.03	4.45	2.24
1-1/2"	0.98	3.19	5.55	2.52
2"	1.26	3.82	5.55	2.68

unit:in





Industrial Valves
make it happen!

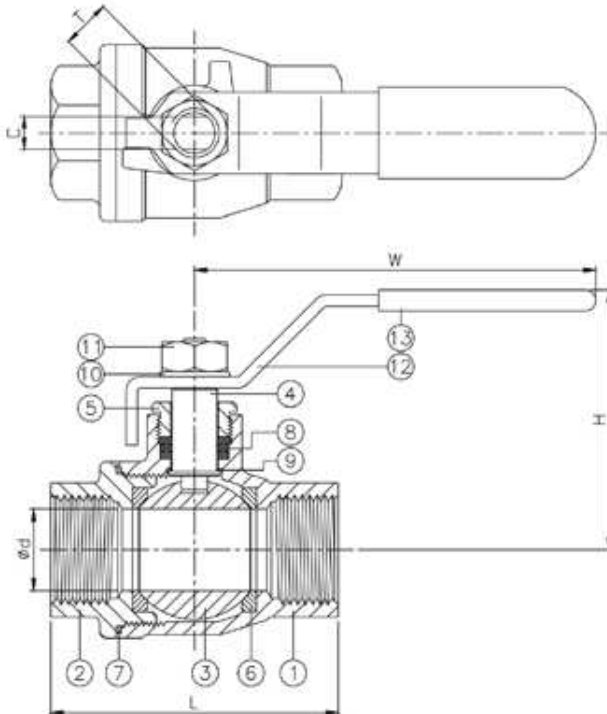
2-PC. SCREWED END BALL VALVE

Email: contacto@trivecavalves.com
www.trivecavalves.com



FEATURES

- Full port, 1/4"~3" (DN8~DN80)
- W.P. : 1000 WOG (PN63)
- W.T. : -20°C~200°C (-4°F~392°F)
- Investment casting
- Blow-out proof stem
- Anti-static device (option)
- Thread type : ASME B1.20.1 (NPT)
DIN2999 & BS21
ISO7/1 & EN10226



ITEM	PARTS	MATERIAL	
1	BODY	ASTM A351-CF8M	ASTM A216-WCB
2	CAP		
3	BALL	ASTM A351-CF8M	
4	STEM	ASTM A276-316	
5	GLAND NUT	AISI 304	
6	SEAT	PTFE / RTFE	
7	SEAL	PTFE	
8	PACKING		
9	THRUST WASHER	AISI 304	
10	SPRING WASHER		
11	NUT	AISI 304	
12	HANDLE		
13	HANDLE SLEEVE	PVC	

DN	d	L	H	W	C	T	Torque (N-m)	Weight (kg)
8	12	51.5	49	102	5	5/16"W	4.1	0.2
10	13	51.5	49	102	5	5/16"W	4.1	0.2
15	15	60.5	49	102	5	5/16"W	4.9	0.3
20	20	70.5	62.5	120	6	3/8"W	7.4	0.5
25	25	83.5	75	158	8	7/16"W	11.4	0.9
32	32	97	81.5	158	8	7/16"W	17.9	1.3
40	38	107	99	188	9	1/2"W	21.2	2.2
50	50	135	108	188	9	1/2"W	26	3.5
65	65	159.5	136.5	245	12	3/4"W	48.6	6.2
80	80	185.5	145.5	245	12	3/4"W	156	10.3

NPS	d	L	H	W	C	T	Torque (in-lb)	Weight (lb)
1/4"	0.47	2.03	1.93	4.02	0.2	5/16"W	36	0.5
3/8"	0.51	2.03	1.93	4.02	0.2	5/16"W	36	0.5
1/2"	0.59	2.38	1.93	4.02	0.2	5/16"W	43	0.7
3/4"	0.79	2.78	2.46	4.72	0.24	3/8"W	65	1.1
1"	0.98	3.29	2.95	6.22	0.31	7/16"W	101	2
1-1/4"	1.26	3.82	3.21	6.22	0.31	7/16"W	158	2.9
1-1/2"	1.5	4.21	3.9	7.4	0.35	1/2"W	187	4.9
2"	1.97	5.31	4.25	7.4	0.35	1/2"W	230	7.7
2-1/2"	2.56	6.28	5.37	9.65	0.47	3/4"W	430	13.7
3"	3.15	7.3	5.73	9.65	0.47	3/4"W	1380	22.6

unit:mm



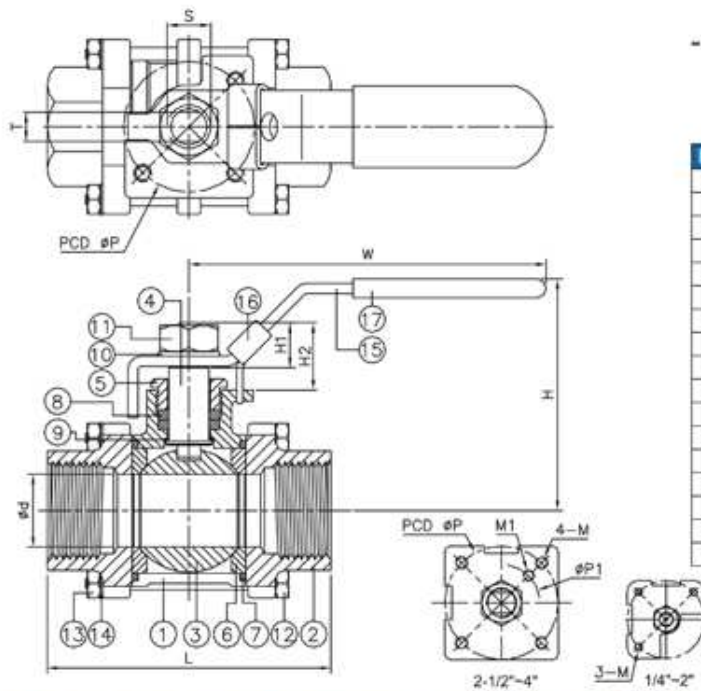
3-PC. SCREWED END BALL VALVE

FEATURES



- Full port, 1/4"~4" (DN8~DN100)
- W.P. : 1000 WOG (PN63)
- W.T. : -20°C~200°C (-4°F~392°F)
- Investment casting
- Blow-out proof stem
- Anti-static device (option)
- Locking device
- ISO 5211 Mounting pad
- **ISO 5211 direct Mounting pad**
- **2413D (option)**

- Thread type : ASME B1.20.1 (NPT)
DIN2999 & BS21
ISO7/1 & EN10226



ITEM	PARTS	MATERIAL	
1	BODY	ASTM A351-CF8M	ASTM A216-WCB
2	CAP		
3	BALL	ASTM A351-CF8M	
4	STEM	ASTM A276-316	
5	GLAND NUT	AISI 304	
6	SEAT	PTFE / RTFE / CTFE	
7	SEAL	PTFE	
8	PACKING		
9	THRUST WASHER	AISI 304	
10	SPRING WASHER		
11	STEM NUT	AISI 304	
12	BOLT		
13	NUT	AISI 304	
14	SPRING WASHER		
15	HANDLE	PVC	
16	LOCKING DEVICE		
17	HANDLE SLEEVE	PVC	

DN	d	L	W	H	H1	H2	P	P1	M	M1	T	S	Torque (N-M)	Weight (kg)
8	11.6	64.5	119	56	11	15	36	-	M 5	-	5	5/16"UNC	4	0.5
10	12.7	64.5	119	56	11	15	36	-	M 5	-	5	5/16"UNC	4	0.4
15	15	66	119	57	11	15	36	-	M 5	-	5	5/16"UNC	4	0.5
20	20	83.4	135.5	63	14	19.5	36	-	M 5	-	6.5	3/8"UNC	7	0.8
25	25	95	158.5	81	15.5	23.5	42	-	M 5	-	8	7/16"UNC	7.5	1.1
32	32	111.2	158.5	87	15.5	20	50	-	M 5	-	8	7/16"UNC	11	1.8
40	38	130	188	96	18	26	50	-	M 6	-	9	1/2"UNC	17	2.5
50	50	151	198	109	18	26	70	-	M 8	-	9	1/2"UNC	45	3.8
65	65	184	280	133	31	40	102	68.5	M 12	M 10	12	3/4"UNC	59	8.8
80	80	209	320	149	31	38	102	68	M 12	M 10	12	3/4"UNC	90	14.3
100	100	234.4	312	171	40	53	102	69	M 12	M 10	16	1"UNC	160	23.5

NPS	d	L	W	H	H1	H2	P	P1	M	M1	T	S	Torque (in-lb)	Weight (lb)
1/4"	0.46	2.54	4.69	2.2	0.43	0.59	1.42	-	M 5	-	0.2	5/16"UNC	35.4	1.1
3/8"	0.5	2.54	4.69	2.2	0.43	0.59	1.42	-	M 5	-	0.2	5/16"UNC	35.4	0.9
1/2"	0.59	2.6	4.69	2.24	0.43	0.59	1.42	-	M 5	-	0.2	5/16"UNC	35.4	1.1
3/4"	0.79	3.28	5.33	2.48	0.55	0.77	1.42	-	M 5	-	0.26	3/8"UNC	62	1.8
1"	0.98	3.74	6.24	3.19	0.61	0.93	1.65	-	M 5	-	0.31	7/16"UNC	66.4	2.4
1-1/4"	1.26	4.38	6.24	3.43	0.61	0.79	1.97	-	M 5	-	0.31	7/16"UNC	97.4	4
1-1/2"	1.5	5.12	7.4	3.78	0.71	1.02	1.97	-	M 6	-	0.35	1/2"UNC	150.5	5.5
2"	1.97	5.94	7.8	4.29	0.71	1.02	2.76	-	M 8	-	0.35	1/2"UNC	398.3	8.4
2-1/2"	2.56	7.24	11.02	5.24	1.22	1.57	4.02	2.7	M 12	M 10	0.47	3/4"UNC	522.2	19.4
3"	3.15	8.23	12.6	5.87	1.22	1.5	4.02	2.68	M 12	M 10	0.47	3/4"UNC	796.6	31.5
4"	3.94	9.23	12.28	6.73	1.57	2.09	4.02	2.72	M 12	M 10	0.63	1"UNC	1416.1	51.8

unit:mm

unit:in

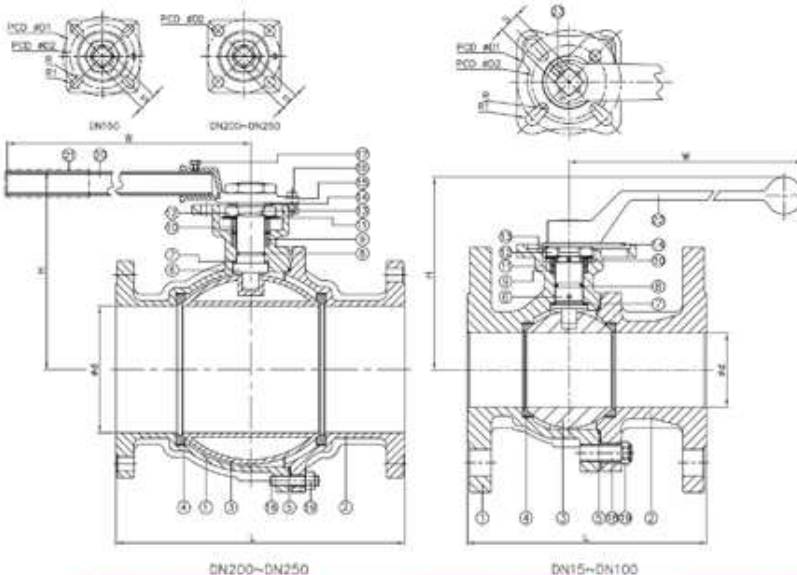




2-PC. FLANGED END BALL VALVE

FEATURES

- Full port, 1/2"~10" (DN15~DN250)
- W.P. : CLASS 150/300
- W.T. : -20°C~200°C (-4°F~392°F)
- Investment casting
- Blow-out proof stem
- Live-loading design
- Anti-static device
- Locking device
- ISO 5211 direct mounting pad
- **API 607 Fire safe approved**
- **ISO 15848 fugitive emission approved (option)**
- **Automation accessories (option)**



ITEM	PARTS	MATERIAL
1	BODY	ASTM A351-CF8M
2	CAP	ASTM A216-WCB
3	BALL	SOLID: ASTM A351-CF8M / HOLLOW: ASTM A240-316
4	SEAT	PTFE / RTFE
5	SEAL	GRAPHITE
6	STEM	ASTM A276-316
7	THRUST WASHER	CTFE
8	O-RING	VITON
9	PACKING	GRAPHITE
10	GLAND RING	AISI 304
11	BELLEVILLE WASHER	AISI 301
12	STEM NUT	
13	LOCKING WASHER	
14	FLAT WASHER	
15	HANDLE HEAD	
16	STOP PIN	AISI 304
17	BOLT	
18	STUD	
19	NUT	
20	STEEL TUBE	
21	HANDLE SLEEVE	PVC
22	HANDLE	
23	SOCKET SET SCREW	AISI 301

- ABOVE MENTIONED MATERIALS APPLY TO FIRE SAFE DESIGN
- ISO 15848 DESIGN SHOULD REPLACE WITH PTFE SEAL & PACKING

DN	d	CLASS 150			CLASS 300			D1	D2	R	R1	S	Torque(N-M)
		L	H	W	L	H	W						
15	15	108	85	190	140	84.5	197.5	42	36	2.75	2.75	9	5.2
20	20	117	89.5	190	152	94.5	197.5	42	36	2.75	2.75	9	8
25	24	127.5	94.2	190	165	99.5	197.5	50	42	2.75	3.5	11	12.5
32	30	140.5	97.9	190	178	105	197.5	50	42	2.75	3.5	11	12
40	38	165	120.9	235	190	124.5	247.5	70	50	3.5	4.5	14	24.5
50	50	178	129.9	235	216	129	247.5	70	50	3.5	4.5	14	32
65	64	190.5	156.3	325	241	154.5	340	102	70	4.5	5.5	17	38
80	76	203	163.3	325	282	165.5	340	102	70	4.5	5.5	17	45
100	98	229	190.9	325	305	188	340	125	102	5.5	6.5	22	55
125	125	356	232	743	-	-	-	125	102	5.5	6.5	27	160
150	150	394	230	743	403	253	743	125	102	5.5	6.5	27	250
200	200	457	312	840	-	-	-	-	140	8.5	-	36	470
250	250	533	350	1040	-	-	-	-	140	8.5	-	36	750

NPS	d	CLASS 150			CLASS 300			D1	D2	R	R1	S	Torque(in-lb)
		L	H	W	L	H	W						
1/2"	0.59	4.25	3.35	7.48	5.51	3.33	7.78	1.65	1.42	0.11	0.11	0.35	46
3/4"	0.79	4.81	3.52	7.48	5.98	3.72	7.78	1.65	1.42	0.11	0.11	0.35	70.8
1"	0.94	5.02	3.71	7.48	6.5	3.92	7.78	1.97	1.65	0.11	0.14	0.43	110.6
1-1/4"	1.18	5.53	3.85	7.48	7.01	4.13	7.78	1.97	1.65	0.11	0.14	0.43	106.2
1-1/2"	1.5	6.5	4.76	9.25	7.48	4.9	9.74	2.76	1.97	0.14	0.18	0.55	218.8
2"	1.97	7.01	5.11	9.25	8.5	5.08	9.74	2.76	1.97	0.14	0.18	0.55	283.2
2-1/2"	2.52	7.5	6.15	12.8	9.49	6.08	13.39	4.02	2.76	0.18	0.22	0.67	336.3
3"	2.99	7.99	6.43	12.8	11.1	6.52	13.39	4.02	2.76	0.18	0.22	0.67	398.3
4"	3.86	9.02	7.52	12.8	12.01	7.4	13.39	4.92	4.02	0.22	0.26	0.87	486.8
5"	4.92	14.02	9.13	29.25	-	-	-	4.92	4.02	0.22	0.26	1.06	1416.1
6"	5.91	15.51	9.06	29.25	15.87	9.96	29.25	4.92	4.02	0.22	0.26	1.06	2212.7
8"	7.87	17.99	12.28	33.07	-	-	-	-	5.51	0.33	-	1.42	4159.8
10"	9.84	20.98	13.78	40.94	-	-	-	-	5.51	0.33	-	1.42	6638

unit:mm

unit:in

